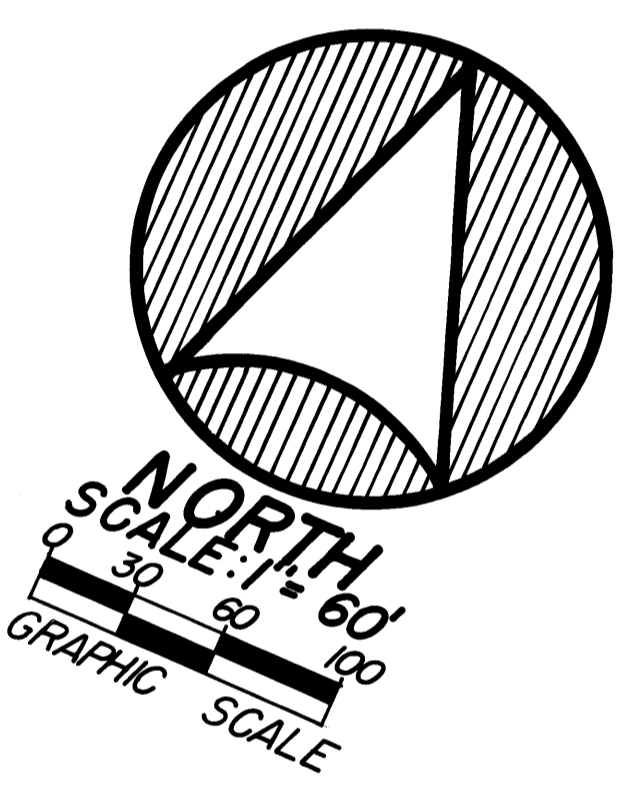
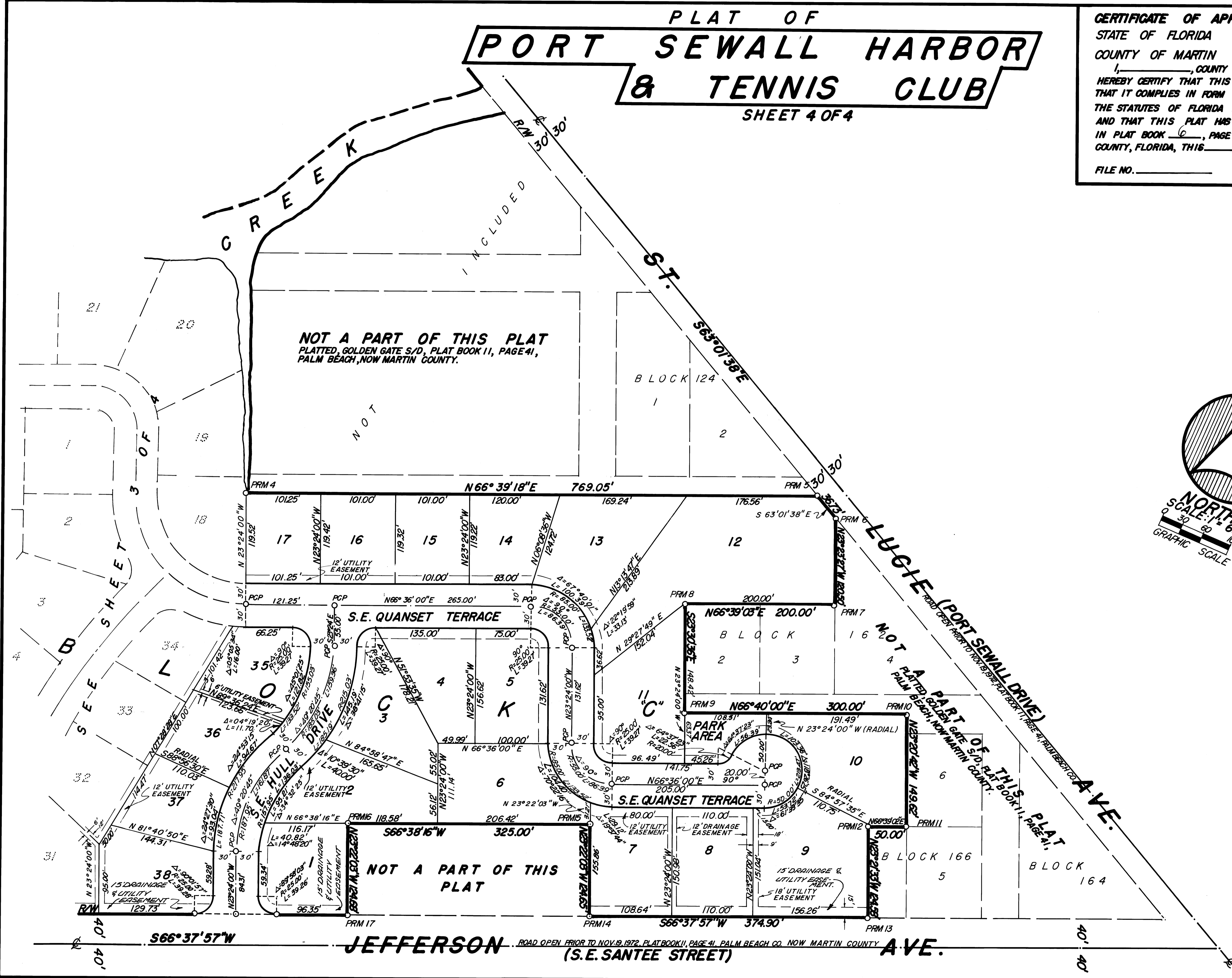


PLAT OF PORT SEWALL HARBOR & TENNIS CLUB

SHEET 4 OF 4

CERTIFICATE OF APPROVAL OF COUNTY CLERK
 STATE OF FLORIDA
 COUNTY OF MARTIN
 I, _____, COUNTY CLERK OF MARTIN COUNTY, FLORIDA,
 HEREBY CERTIFY THAT THIS PLAT HAS BEEN EXAMINED AND
 THAT IT COMPLIES IN FORM WITH ALL THE REQUIREMENTS OF
 THE STATUTES OF FLORIDA PERTAINING TO MAPS AND PLATS,
 AND THAT THIS PLAT HAS BEEN FILED FOR RECORD
 IN PLAT BOOK 6, PAGE 46, PUBLIC RECORDS OF MARTIN
 COUNTY, FLORIDA, THIS _____ DAY OF _____ A.D. 19____.

FILE NO. _____ NAME, CLERK _____
 MARTIN COUNTY, FLORIDA



NOTE: BEARINGS ON ASSUMED DATUM FOR CALCULATION PURPOSES.

GREECH & ASSOC.
 SURVEYORS & ENGINEERS
 STUART, FLORIDA